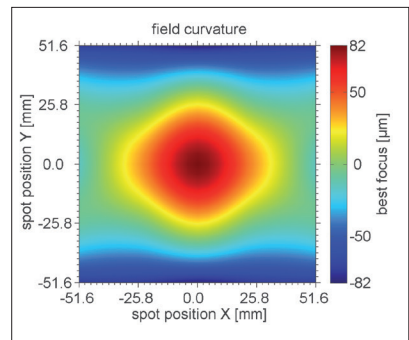
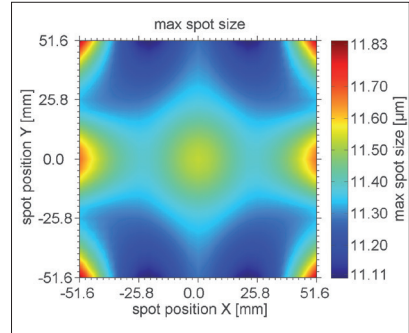


F-Theta JENar™ Silverline™ Lens

High Power Lens – JENar™ 170-355-140

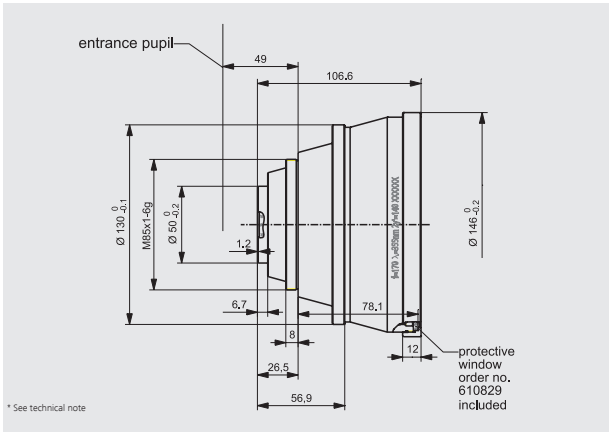
Parameters	JENar™ 170-355-140 Telecentric fused silica lens for large scan fields
Focal length:	170 mm
Wavelength:	355 nm
Scan field (X x Y); Ø:	(100 mm x 100 mm); 140 mm
Diagonal scan angle:	± 25°
X/Y mirror angle:	± 8.9°
Back working distance:	235.8 mm
Flange focus distance:	315.8 mm
Input beam Ø 1/e ² :	10 mm
Focus size Ø 1/e ² :	11 µm
a1 a2:	13 mm 42.5 mm
Telecentricity (only F-Theta with scanner):	4.8° 4.8°
Group delay dispersion (GDD)*:	8490 fs ²
LIDT coating pulsed; CW*:	1.0 J/cm ² * (τ/[ns]) ^ 0.40; 1.0 MW/cm ²
LIDT system pulsed; CW*:	0.5 J/cm ² * (τ/[ns]) ^ 0.40; 0.5 MW/cm ²
Weight:	1.85 kg
Order Number:	586840

Spot properties

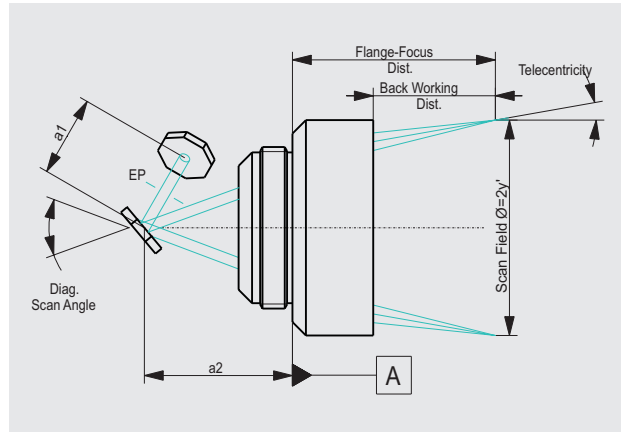


Specifications

JENar™ 170-355-140



Definition of geometrical parameters



JENar®: Registered in EU, CN, JP, SG, US | Silverline®: Registered in DE, JP, SG, IN

The data given are nominal values for the specified application parameters. Jenoptik provides Zemax® BlackBox files for simulating application results for customized parameters (e.g. wavelength, scanner geometry, beam diameter, ...).
Back working distance, Flange focus distance, and focal length vary by ± 1.5 % due to manufacturing variances.

It is our policy to constantly improve the design and specifications. Accordingly, the details represented herein cannot be regarded as final and binding.