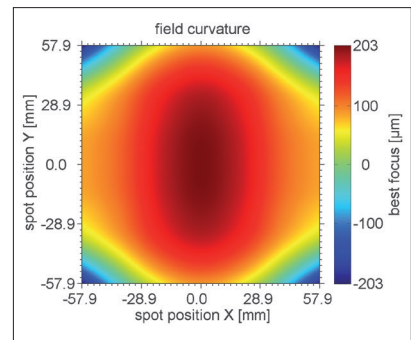
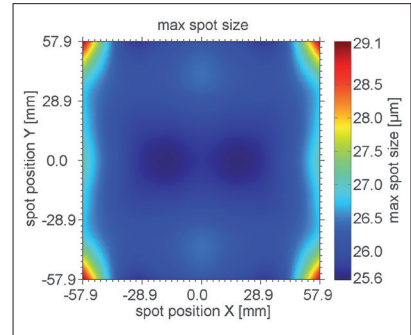


# F-Theta JENar™ Silverline™ Lens

## High Power Lens – JENar™ 255-900...1100-160

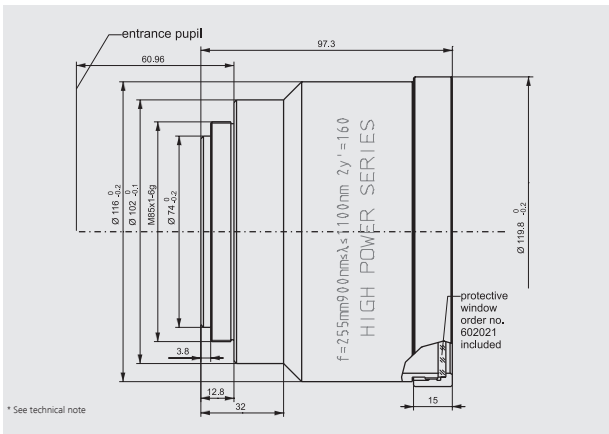
Parameters	JENar™ 255-900...1100-160 Fused silica lens
Focal length:	255 mm
Wavelength:	900...1100 nm
Scan field (X x Y); Ø:	(114 mm x 114 mm); 160 mm
Diagonal scan angle:	± 18°
X/Y mirror angle:	± 6.4°
Back working distance:	301.5 mm @ 900 nm; 304.2 mm @ 1100 nm
Flange focus distance:	386.1 mm @ 900 nm; 388.8 mm @ 1100 nm
Input beam Ø 1/e <sup>2</sup> :	20 mm
Focus size Ø 1/e <sup>2</sup> :	21 µm @ 900 nm; 26 µm @ 1100 nm
a1   a2:	25 mm   48.46 mm
Telecentricity (only F-Theta   with scanner):	7.2°   7.4°
Group delay dispersion (GDD)*:	904 fs <sup>2</sup>
LIDT coating pulsed; CW*:	under investigation
LIDT system pulsed; CW*:	under investigation
Weight:	1.2 kg
Order Number:	601804

### Spot properties

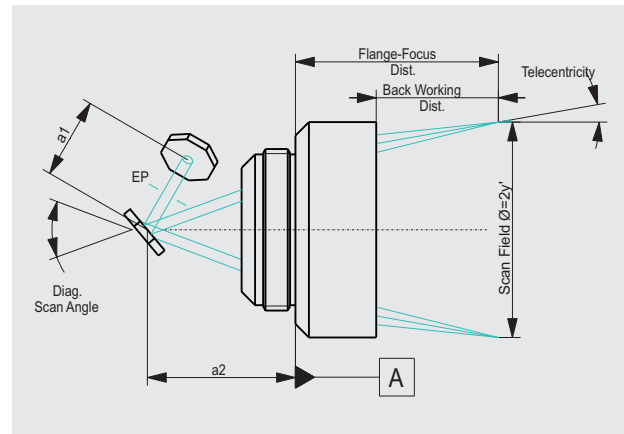


### Specifications

#### JENar™ 255-900...1100-161



### Definition of geometrical parameters



JENar®: Registered in EU, CN, JP, SG, US | Silverline®: Registered in DE, JP, SG, IN

The data given are nominal values for the specified application parameters. Jenoptik provides Zemax® BlackBox files for simulating application results for customized parameters (e.g. wavelength, scanner geometry, beam diameter, ...). Back working distance, Flange focus distance, and focal length vary by ± 1.5 % due to manufacturing variances.

It is our policy to constantly improve the design and specifications. Accordingly, the details represented herein cannot be regarded as final and binding.