




FAQ - JENOPTIK GRYPHAX® how to find the focus at live preview easily?


At the GRYPHAX® application, we provide a somewhat hidden but very useful function to quickly determine the image sharpness in the preview image.


To find the best focus level on live preview you can use the **focus indicator** bar of “Magnifier tool” . **Activate** the magnifier glass by mouse or hold the keyboard key: **space bar** for activation temporary.

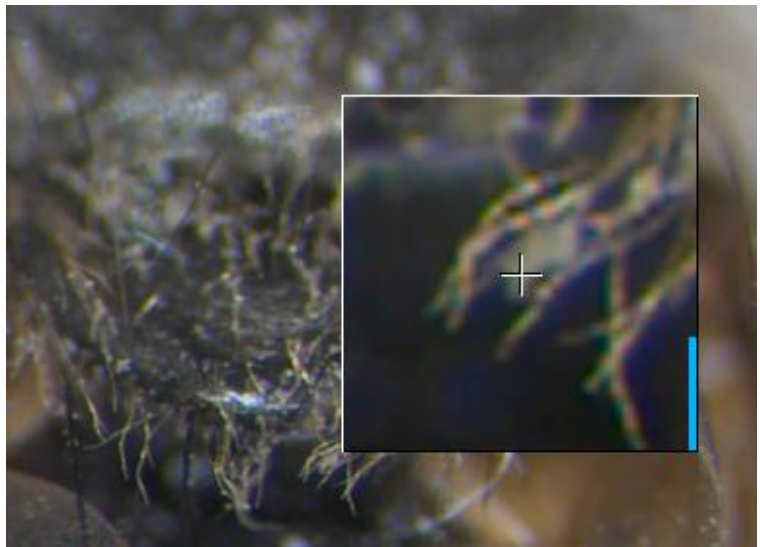
Afterwards, the magnifier glass will displayed at the preview window at the mouse pointer position. The focus indicator bar is located in the bottom right corner of the magnifier glass.

Change the focus by using the z-drive (manually or by motor stepper) from microscope. In addition, observe the focus meter level. Stop the focusing on highest level of focus meter.

Magnifier tool with “focus indicator bar”:

 “red” bar – shows the **max peak** of focus level of magnifier ROI

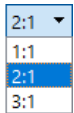
 “blue” bar – shows the **current relative focus** level of magnifier ROI



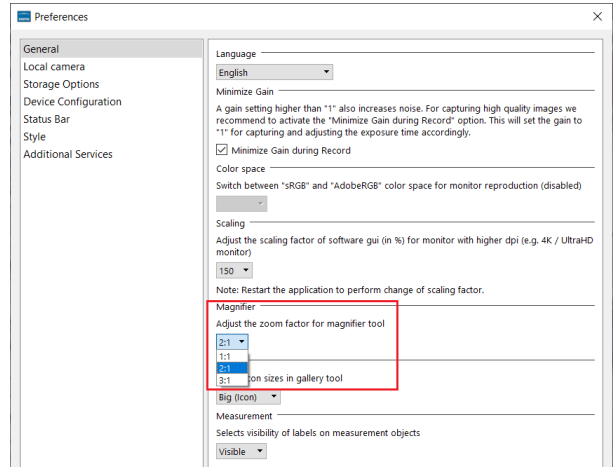


Moreover, the zoom factor of “Magnifier tool” can be **adjusted** at software preferences by **3:1 | 2:1 or 1:1**.

Open GRYPHAX preferences section “General” and change the zoom factor on drop down box from Magnifier.



The default factory value is “2:1”.



Download latest application

Free download of [GRYPHAX](https://www.jenoptik.com/progres-gryphax-software) after registration:
<https://www.jenoptik.com/progres-gryphax-software>

Latest GRYPHAX **software manual** within all new feature and tools is download able from the link below: <https://www.jenoptik.com/-/media/websitedocuments/optics/progres/software-gryphax/software-manual.pdf>

Learn more about JENOPTIK GRYPHAX® software and the easy workflows and tools.

Watch our video tutorials.



HELPFUL? We appreciate your feedback.



We looking forward to hearing from you and remain sincerely,

Your JENOPTIK GRYPHAX® Team