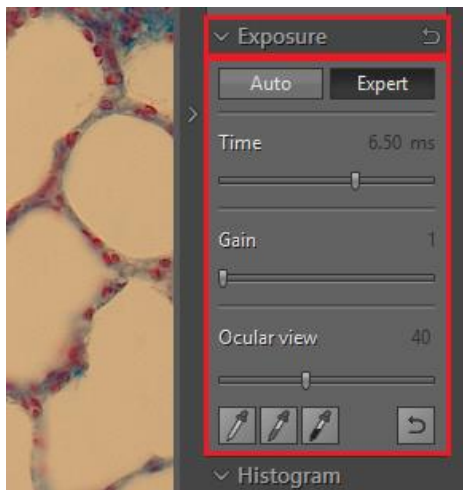




PROGRES GRYPHAX® –
refines every microscope workstation!

Service Information - PROGRES GRYPHAX® software

How does the new feature “Ocular view” work?



Since PROGRES GRYPHAX® software version 1.0.12 we have implemented a new feature „Ocular view“, available at the „Exposure widget“ of PROGRES GRYPHAX® Software.

There are two possibilities to represent the colour reproduction on the screen. If you want to see on the monitor:

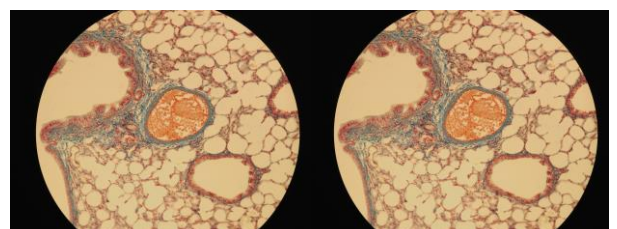
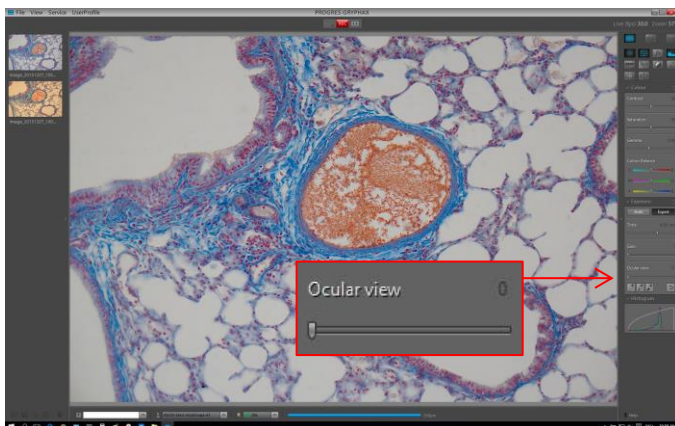
- a) A perfectly grey balanced and coloured image?
- b) What you see in the eyepieces of microscope?

Use workflow a) if you have more than one ProgRes® or PROGRES GRYPHAX® cameras in your laboratory.

All cameras in the laboratory will deliver the same colors.

MONITOR image after grey balance

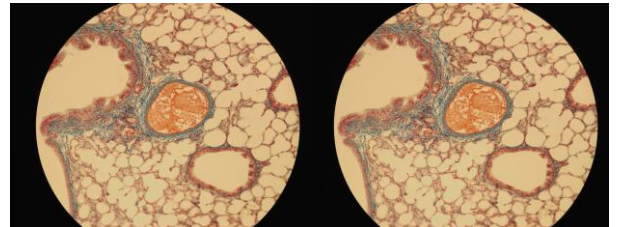
Microscope eyepieces view



Use **workflow b)** if you wants to get on the monitor what you sees in the microscope eyepieces!

MONITOR image after grey balance and „Ocular view“ adjustment

Microscope eyepieces view



1. Start PROGRES GRYPHAX® software.
 - Remove specimens from the microscope
 - Utilize lowest magnification objective on microscope
 - Set intensity of the microscope light source, until it is pleasant for your eyes
 - Set grey balance at the “Exposure widget”

a) A perfectly grey balanced and coloured image

It is recommended to keep the intensity of the microscope light source and auto exposure active.

In case of intensity adjustment of the microscope light source because of objective change, you only need to set the grey balance again

b) What you see in the eye pieces

Bring your specimen back into field of view

NOTE: Press F5 (Freeze = STOP) for an easy comparison of live image and ocular view

Look through the eyepieces and remember the color impression

Use „Ocular view“ slider to get on the monitor what you see in the microscope eyepieces

It is recommended to keep the intensity of the microscope light source and auto exposure active

In case of intensity adjustment of the microscope light source because of objective change, you only need to set the grey balance again

No further „Ocular view“ adjustment is required!



2. Record the first image and get a perfect colored image.

Go into image detail by using 1/1 mode or press shortcut key: "z" on keyboard

3. [Configure your device](#) (under Preferences\Device configuration -

(device means = microscope + camera))

4. [Calibrate](#) the microscope objectives by using the PROGRES GRYPHAX® calibration slide (order number: 563683) and use our „Grid“ function (shortcut key: „g“), to adjust the camera orientation related to the stage for e.g. perfect panorama image results!

Our slogan is program: [PROGRES GRYPHAX® cameras „Refinement of every microscope workstation“](#)