



**Stability –**  
giving you a reliable research tool  
you can count on.



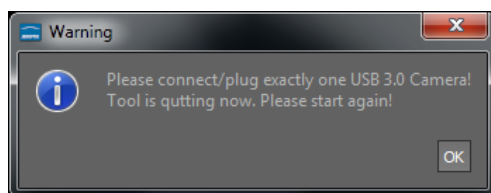
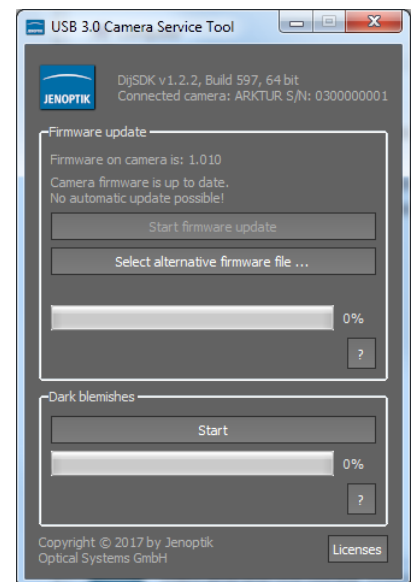
## USB 3.0 Camera Service Tool for PROGRES GRYPHAX® cameras

Service tool to update camera Firmware version and to detect hot / defective sensor pixel for correction.

The "*USB 3.0 Camera Service Tool*" enables user to check the installed camera firmware version and to update the firmware version, if necessary. This service tool is part of the GRYPHAX® software installation 1.1.6 or later.

Additionally, the option "*Dark blemishes*" search for defective/ hot pixel is available, to eliminate such pixel defects of the camera sensor.

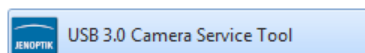
Note: To operate with the *USB 3.0 Camera Service Tool*, the camera driver has to be installed previously. Please **connect only one camera** to the computer and start the service tool. Otherwise, *USB 3.0 Camera Service Tool* will display an error message:



1. To start "*USB 3.0 Camera Service Tool*", please navigate to **start menu** entry under

Jenoptik/GRYPHAX 1.X.X

and double-click to:

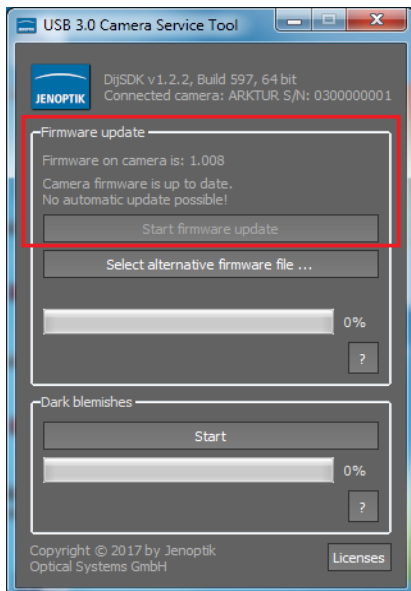


## 2. Firmware update

2.1. After start of *USB 3.0 Camera Service Tool* the software will check the camera's firmware status and verifies it with the firmware status from *USB 3.0 Camera service tool*. There are **three different update options** in regard to the camera firmware:

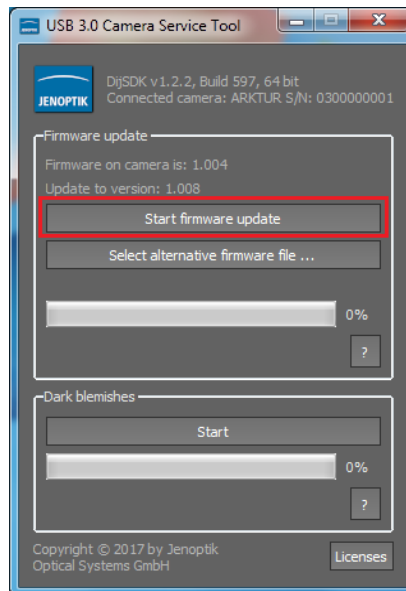
**No automatic firmware update** possible or necessary:

In case of **accordance of the firmware** version, no automatic firmware update is possible. You now may close the *USB 3.0 camera service tool* by close button.



**Automatic firmware update** (by inbuilt firmware version):

In case that the camera **firmware is outdated**, please start firmware update process by option "*Start firmware update*":



**Manual update** by selecting alternative firmware file:

To upgrade or downgrade an **alternative camera firmware** version you may use option

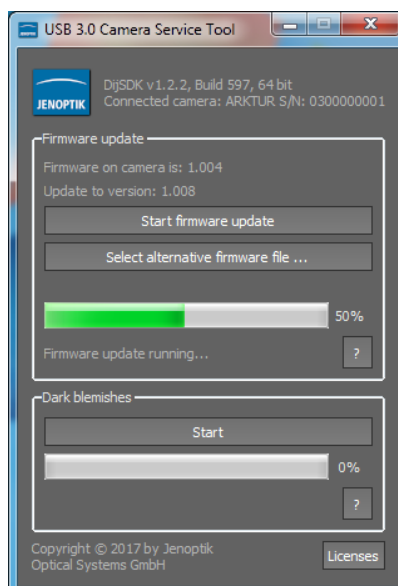
"*Select alternative firmware file...*"

from disk. The firmware version of camera and file will be displayed at service tool. Now you can start update by option

"*Start firmware update*"

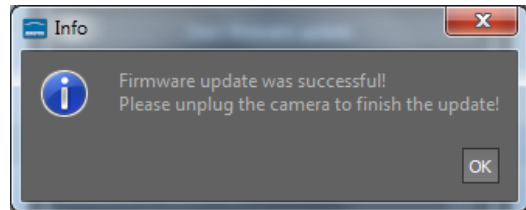
**Note:** An alternative firmware file will be provided by Jenoptik only!

2.2. After start of *USB 3.0 Camera Service Tool* the software will check the camera. After start firmware update process, the software is displaying the current update status by progress bar.





2.3. After a **successful firmware update** the *USB 3.0 camera service tool* will restart the camera and close software automatically.

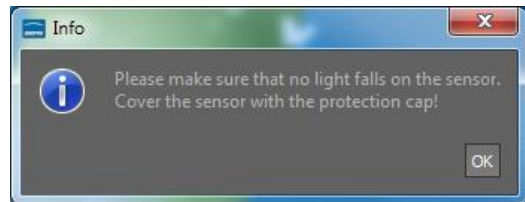


Note: The firmware update procedure can be take several seconds depending on connected camera type. Please do not interrupt the process. This can be affect the camera.

### 3. Dark blemish search

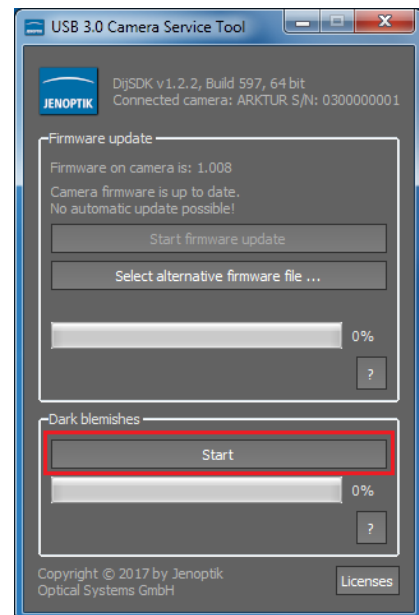
In case that the camera is displaying white pixel defects at dark images, please proceed the *Dark blemish* search to eliminate such “hot pixels”. The software will detect defective pixels and add these pixels to a camera-internal list of defective pixels. So the application software will correct this automatically.

3.1. To **start a dark blemish search** procedure the sensor must be covered by using the protection cap!

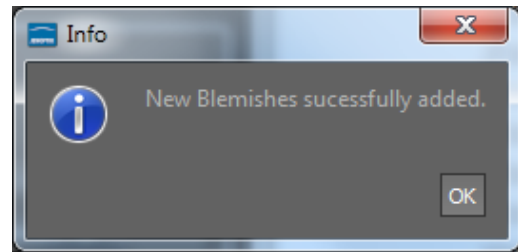


3.2. Start the dark blemish search by pressing “**Start**”. The service tool will record several images to detect defective pixel(s) from camera sensor. This can take several seconds depending on the camera type used.

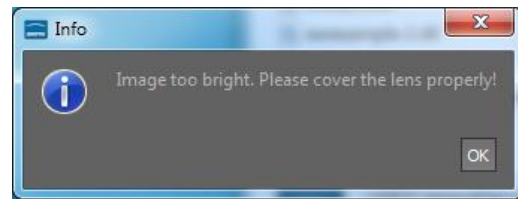
Note: During dark blemish search, please do not remove the cap from sensor, otherwise the software cannot detect the defective pixels and the search process will be aborted!



3.3. After [successful dark blemish search](#), the service tool will add the new detected hot pixels to the list of defective pixel.



3.4. If error "*Image too bright*" occurs, please check, if the camera sensor is completely covered by the protection cap.



Note: Make sure that no light falls onto the sensor!

3.5. In case of error, [restart the service tool](#) and try to search for dark blemish pixel again.

Learn more about PROGRES GRYPHAX® software and the easy workflows and tools.

Watch our video tutorials.

[VIDEO TUTORIALS](#)

HELPFUL? We appreciate your feedback.

[FEEDBACK](#)

We looking forward to hearing from you and remain sincerely,

Your PROGRES GRYPHAX® Team