



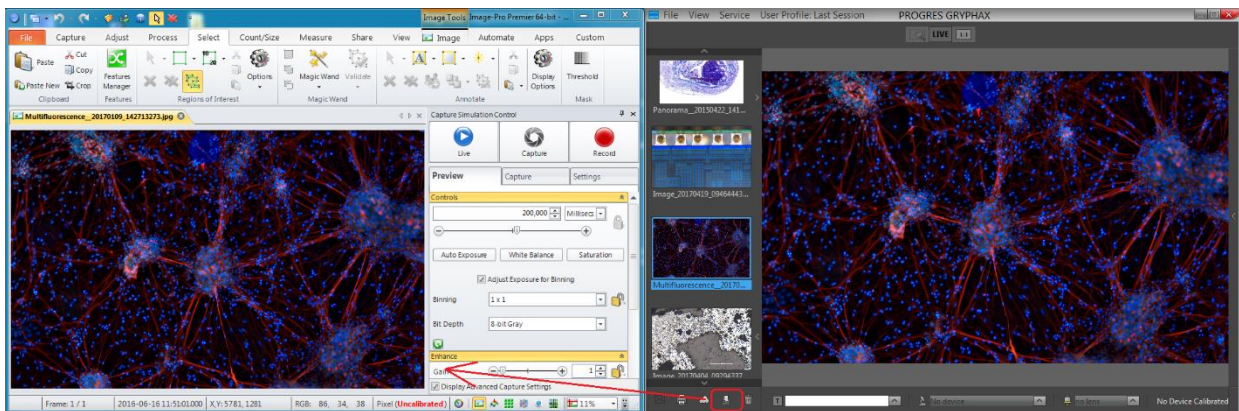
Stability –
giving you a reliable research tool
you can count on.

User Guide for “Image Analysis” function of PROGRES GRYPHAX® software

The “Image analysis function” of PROGRES GRYPHAX® software enables user to send saved media files from Gallery to external 3rd party imaging software tools directly from GRYPHAX software.

Overview:


Image from GRYPHAX directly transferred to 3rd Party software e.g. “ImagePro Premier” (MediaCybernetics)



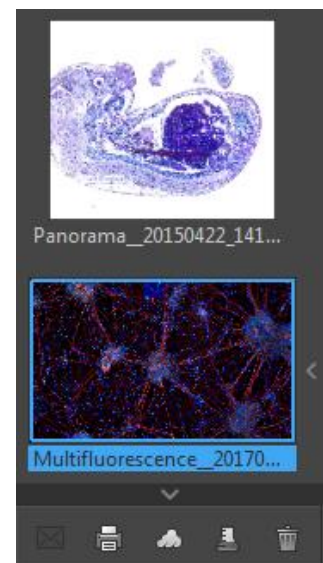
General description:

The “Image analysis function” is part of the *Gallery bar*. Located on the left software side on the bottom of the Gallery.

The Gallery preview window shows thumbnails from the media files of selected destination folder. The Gallery bar contains additional options for selected items from Gallery.

To **open or close** of the *Gallery tool*/press the bottom arrow  on the left software side or use the keyboard short cut (**ctrl / cmd + G**).

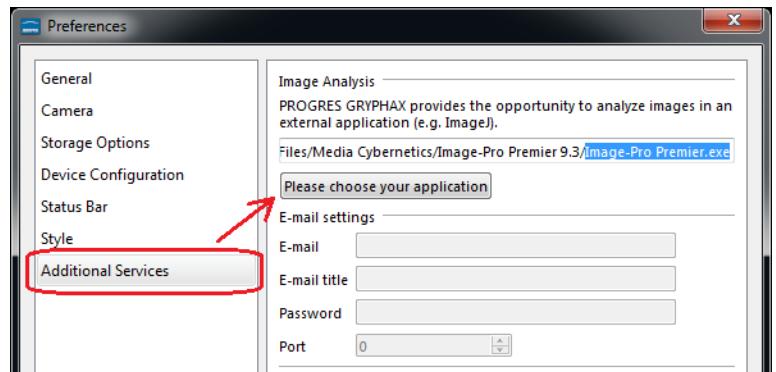
Note: The Gallery bar will be active after selection of one media thumbnail.




Preparation:

To use the “Image analysis function” open Preferences and navigate to the section: “Additional Services” and choose the Application you want to transfer the images from GRYPHAX software.

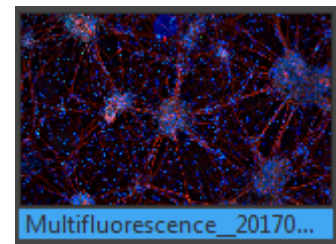
Press the bottom “Please choose your application” and a separate file selection windows will be opened to search and select the appropriate software.



Start image transfer:

To **activate** the image transfer to 3rd party software tool, select the according image file thumbnail from GRYPHAX Gallery by left-hand mouse click and press the “Image analysis” button  from Gallery bar.

The analysis function immediately opening the pre-selected 3rd party software and transfer the selected image.



Note: Multiple items cannot be transferred by “Image analysis” function.

Video tutorial:

[Press the link](#) to watch the video tutorial for Image Analysis function.

Limitation:

- Single images can be transferred by “Analysis” function only.
- Gallery and Analysis function are not visible during “Presentation” view.
- Gallery cannot show external media files.
- Gallery bar functions are limited during Multi-Fluorescence mode session



Learn more about PROGRES GRYPHAX® software and the easy workflows and tools.

Watch our video tutorials.

[VIDEO TUTORIALS](#)

HELPFUL? We appreciate your feedback.

[FEEDBACK](#)

We looking forward to hearing from you and remain sincerely,

Your PROGRES GRYPHAX® Team